



Radiant Communications Corp

www.rccfiber.com (800) 969-3427

WPS Series

FTTX PON MDU

The WPS Series indoor fiber optic patch panel is conveniently sized to handle the following PLC Splitter installations:

- 1pc - 32 port PLC Splitter
- 3pc - 16 port PLC Splitter
- 1pc each of a 16 port & 32 port PLC Splitter

Connector styles - various connector styles available.

Dimensions - 16" wide x 5" deep x 14 height .

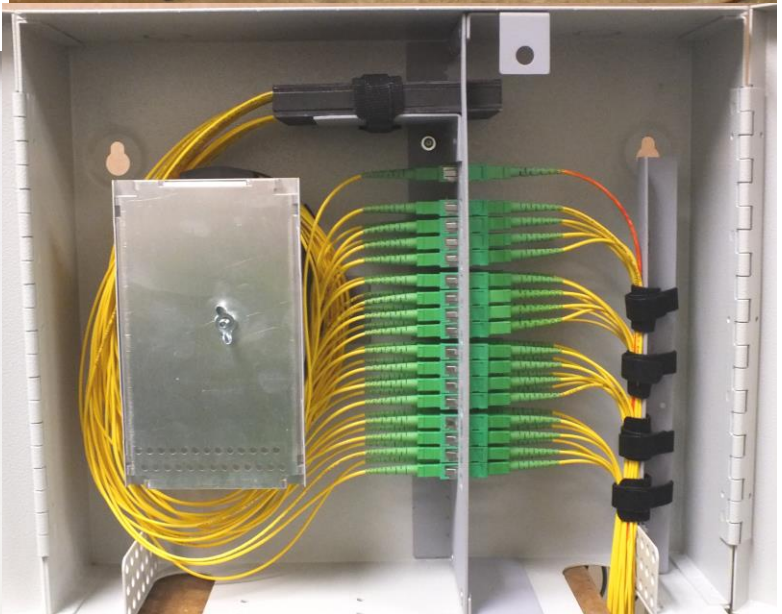
Weight - 16 lbs.

Optional fiber splice tray - clear anodized aluminum with 12 fiber capacity in each tray.

PLC Performance Data – See rear of Data Sheet.

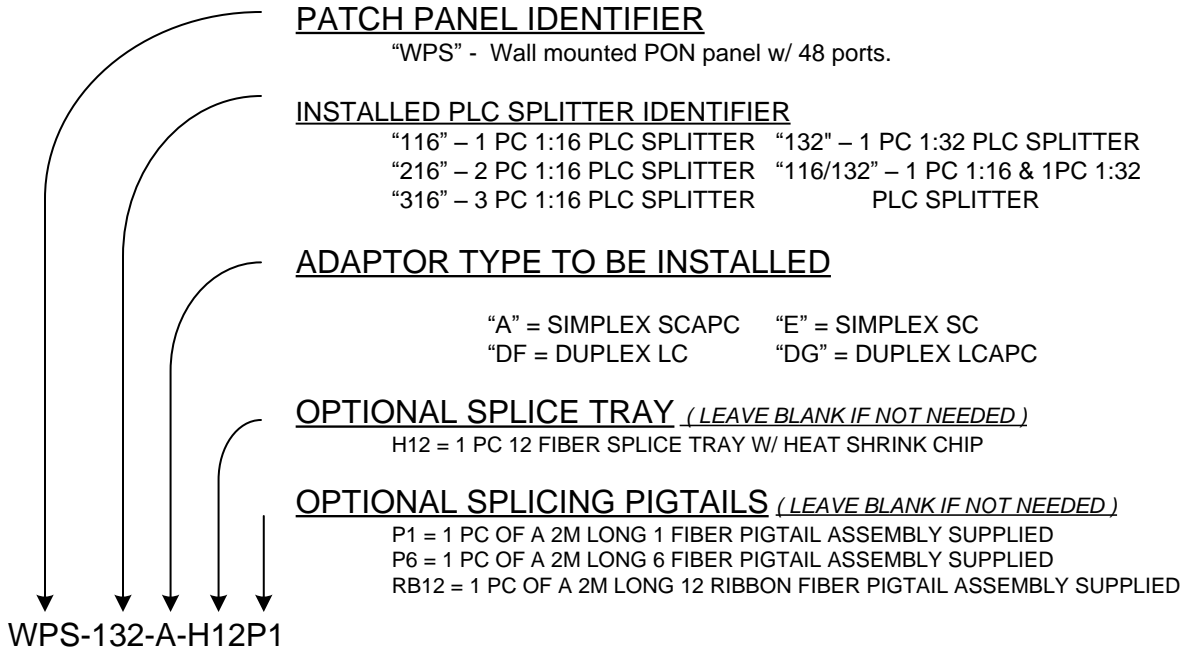
Part Number Information - See rear of Data Sheet.

Pricing Information – Please contact Radiant for all pricing information.



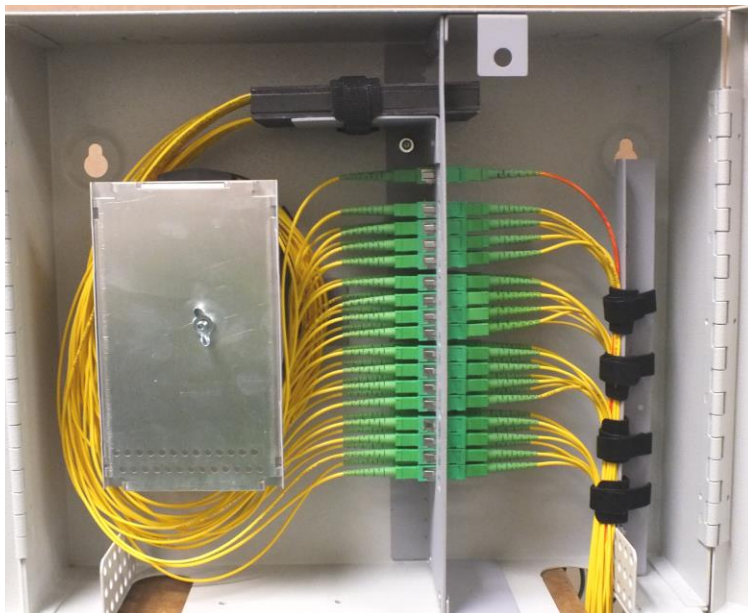
WPS Wall Mount PON Series Indoor Fiber Optic Patch Panels

Wall Mount PON Patch Panel Build Information



Below is an example of the unit with a 32 port PLC Splitter, 32 SCAPC adaptors, accessory kit, optional splice tray installed. Part number would be WPS-132-A-H12

Hook & loop strapping is supplied with each unit for efficient fiber management.



PLC Performance Data

Parameter	Unit	1:16 PLC	1:32 PLC
Operating Wavelength	nm	1260-1650	1260-1650
Insertion Loss(@25C)	dB	≤14.0	≤17.5
Uniformity	dB	1.2	1.5
Return Loss	dB	45 UPC/55 APC	45 UPC/55 APC
Directivity	dB	55	55
Polarizing Depending Loss	dB	0.3	0.3
Operating Temperature	°C	-40°C to +85°C	-40°C to +85°C
Storage Temperature	°C	-40°C to +85°C	-40°C to +85°C
Fiber Length	M	1	1
Fiber Type	-	G657A1	G657A1
Packaging Dimensions	mm	120 x 18 x 80	120 x 18 x 80